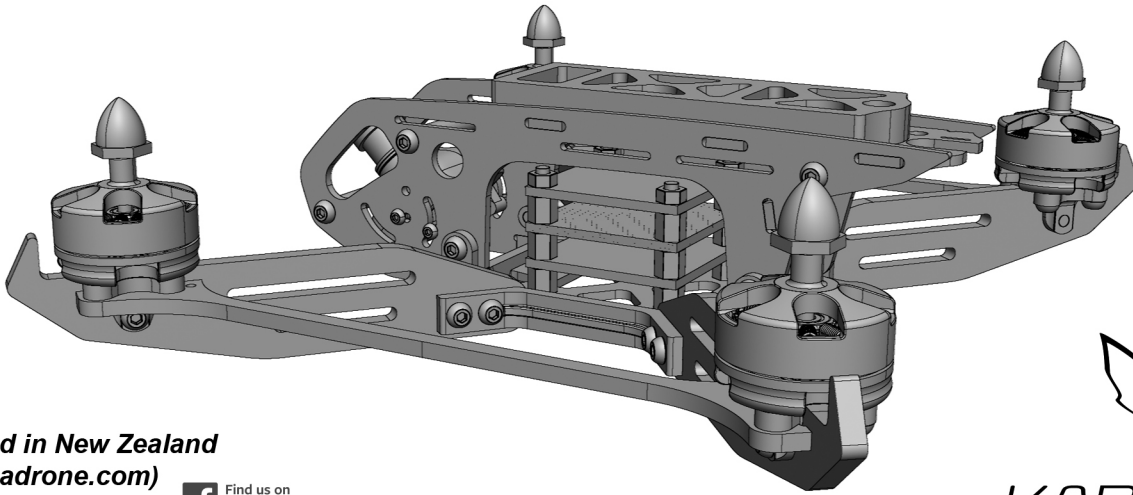


# KAREAREA RD-035,036 KEA and RD-047 TOROA INSTRUCTION MANUAL

## Features:

- The KAREAREA KEA and TOROA is the new age of freestyle and long range FPV racer for 5" 6" and 7" propellers using its own uniquely designed very durable monocoque chassis. It is the first freestyle frame with vertical arms and optional wings for long and smooth mid air hang time and reduced propwash.
- Full 3K Japan Toray T700 grade plane matte carbon fibre plate (not twill, plane CF is much stronger on impact from all directions of crashes). Light weight frame set weights 124g (+, - 1~2g) and 134g (+, - 1~2g) with optional wings including hardware.
- All aluminum parts are 7075 T6 aero grade with hard anodizing except for stand offs.
- The unique design of KEA and TOROA's arm end works as a bumper to protect the motors from impacts of the crash.
- Top and bottom mount battery position for greater usability option for any style of pilots.
- Optimized C.G combined with higher motor position on vertical arms provide superior handling performance for acro flying.
- Monocoque type side plates maximizes CCD camera protection.
- Compatible with FPV cameras (28-29mm CCD cams) such as RunCam Swift and Foxeer FPV CCD cameras.
- Action cameras can be mounted (e.g. GoPro, RunCam 3) by using optional 3D printed camera mount (not included)






Designed in New Zealand  
(kareareadrone.com)

KAREAREA DRONES  Find us on Facebook






## PARTS LIST

### NYLON BOLTS & NUTS

-  BOLTS M3 X 6 QTY 4
-  NUTS M3 QTY 4
-  STAND OFF QTY 12


### CARBON STEEL BOLTS

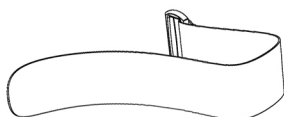
-  M3 X 6 QTY 4
-  M3 X 8 QTY 6
-  M3 X 10 QTY 12

### STAINLESS STEEL NUTS

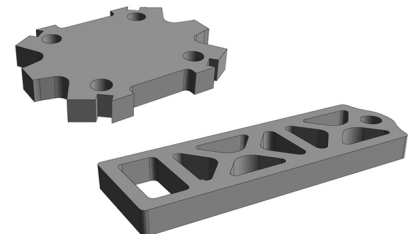
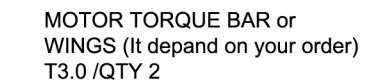
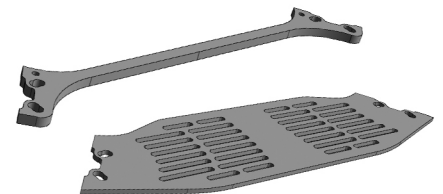
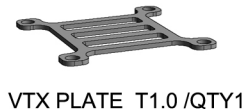
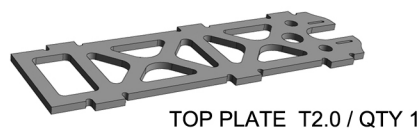
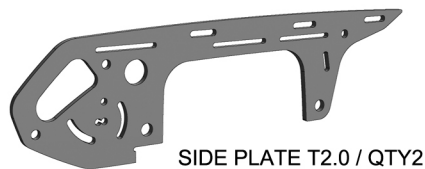
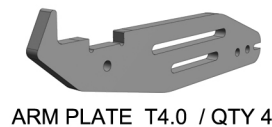
-  M3 CLINCHING NUT QTY 4

### ALUMINIUM STAND OFFS

-  M3 X 29 6061 QTY 3

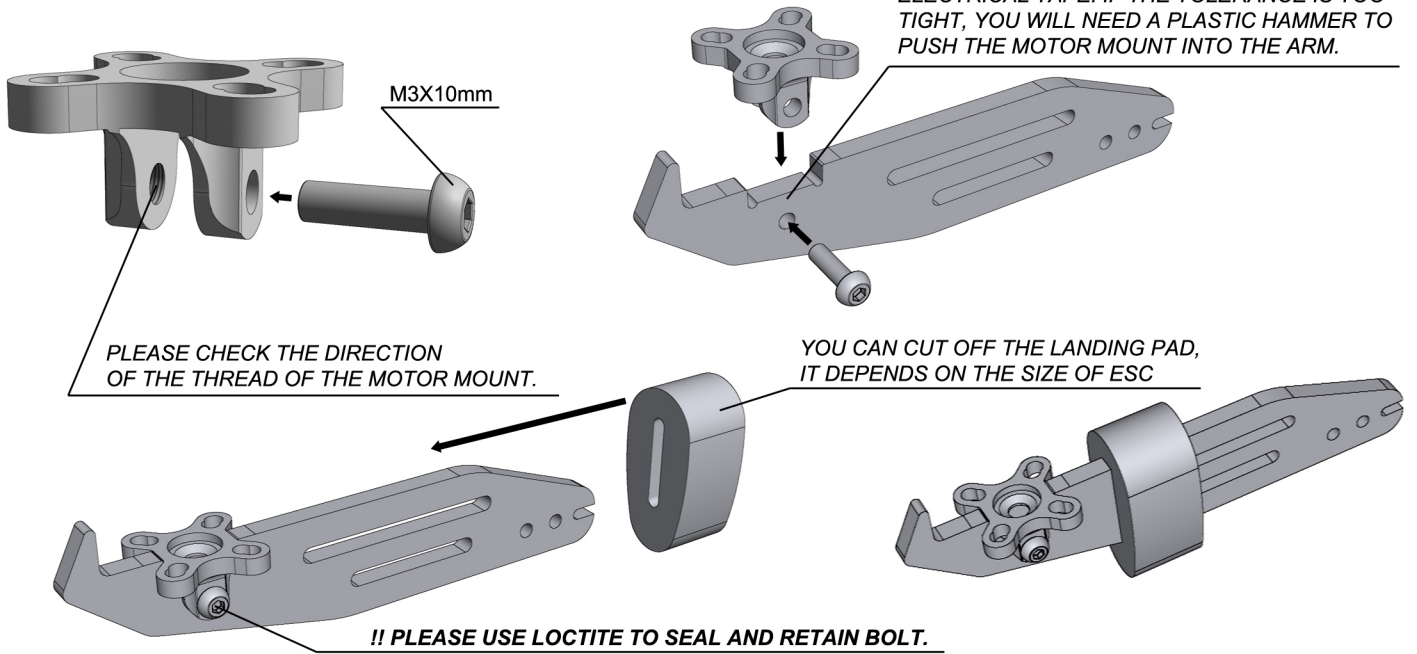


HIGH GRIP LiPo BATTERY  
STRAP 20mm X 255mm / QTY 2

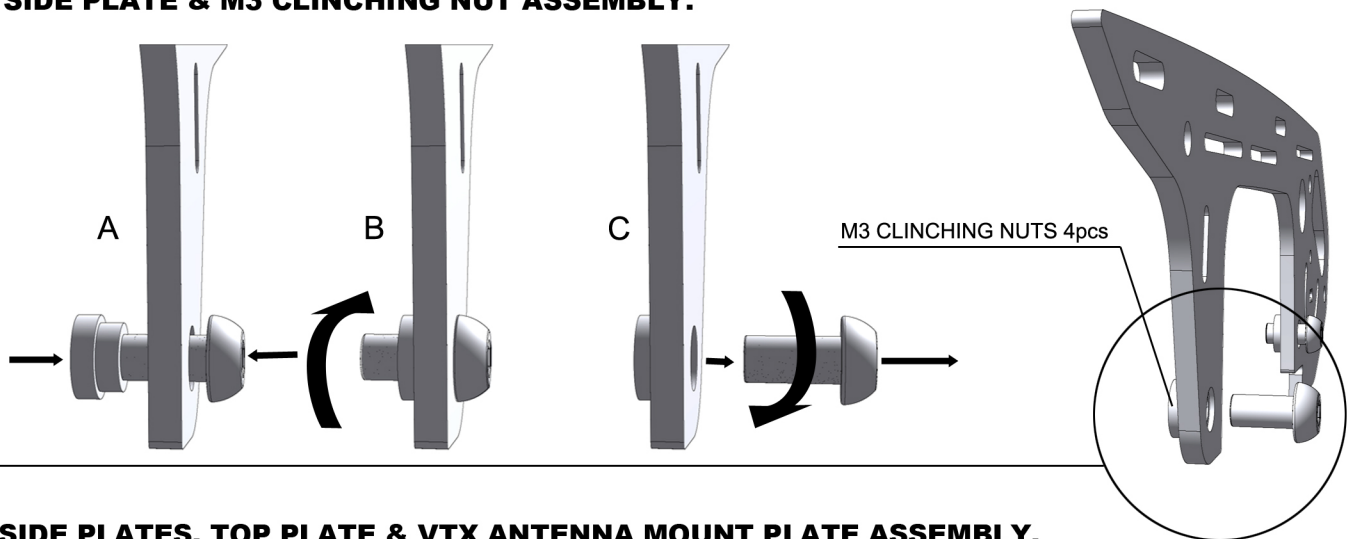


# 1 MOTOR MOUNT AND ARM ASSEMBLY.

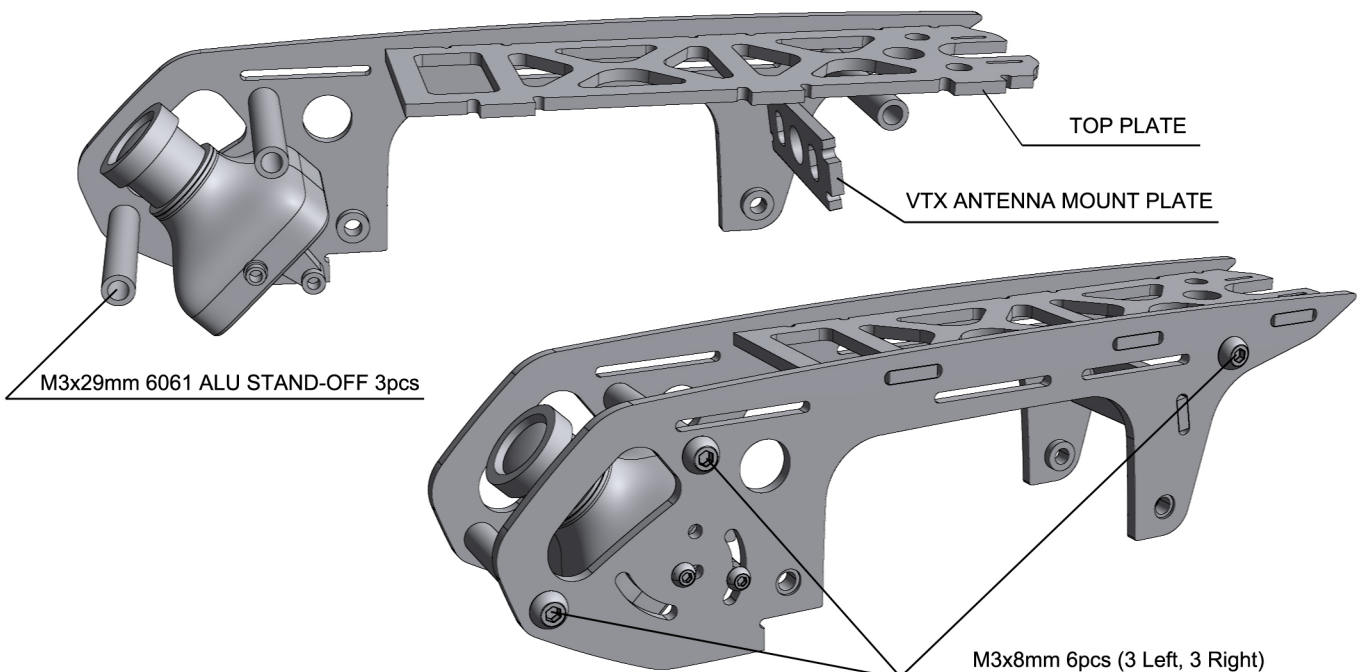
IF THE TOLERANCE OF ARM THICKNESS IS NOT TIGHT ENOUGH FOR THE MOTOR MOUNT, USE ELECTRICAL TAPE. IF THE TOLERANCE IS TOO TIGHT, YOU WILL NEED A PLASTIC HAMMER TO PUSH THE MOTOR MOUNT INTO THE ARM.



# 2 SIDE PLATE & M3 CLINCHING NUT ASSEMBLY.

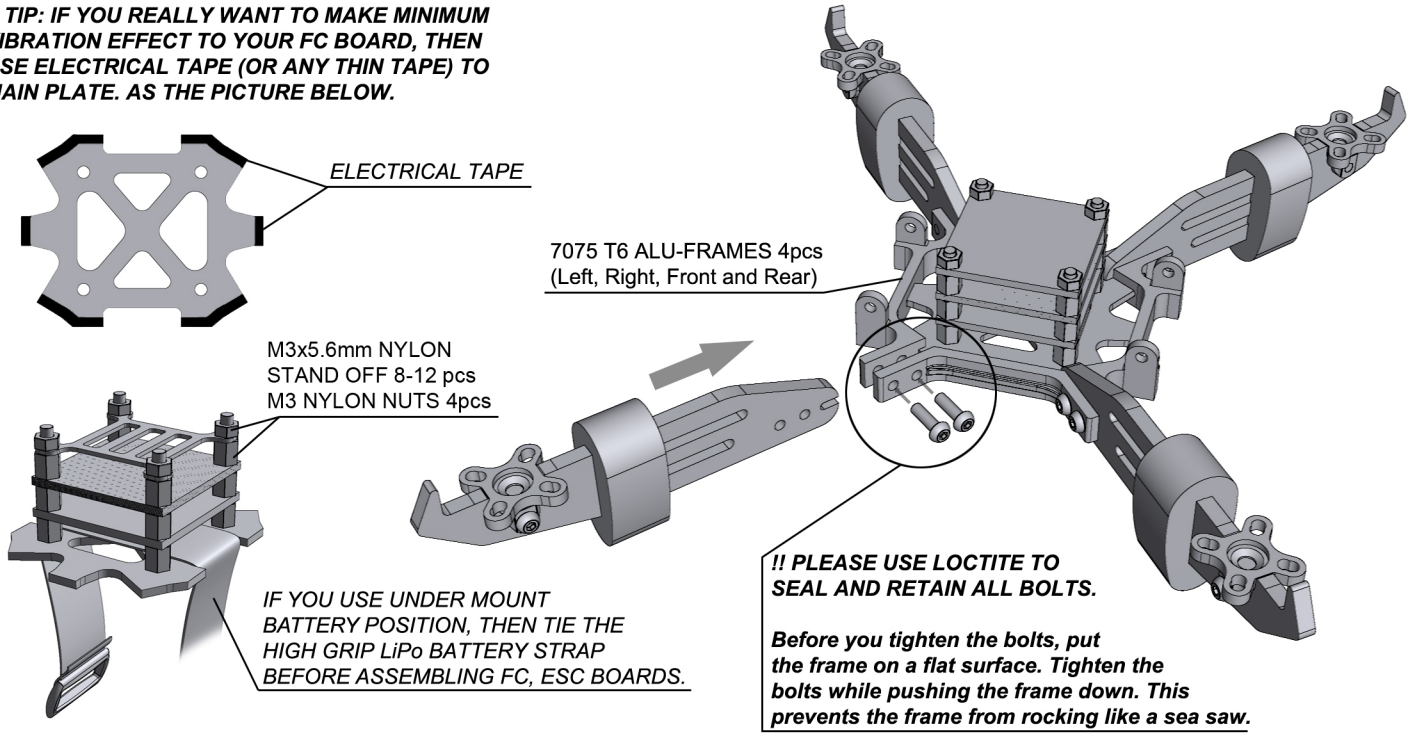


# 3 SIDE PLATES, TOP PLATE & VTX ANTENNA MOUNT PLATE ASSEMBLY.

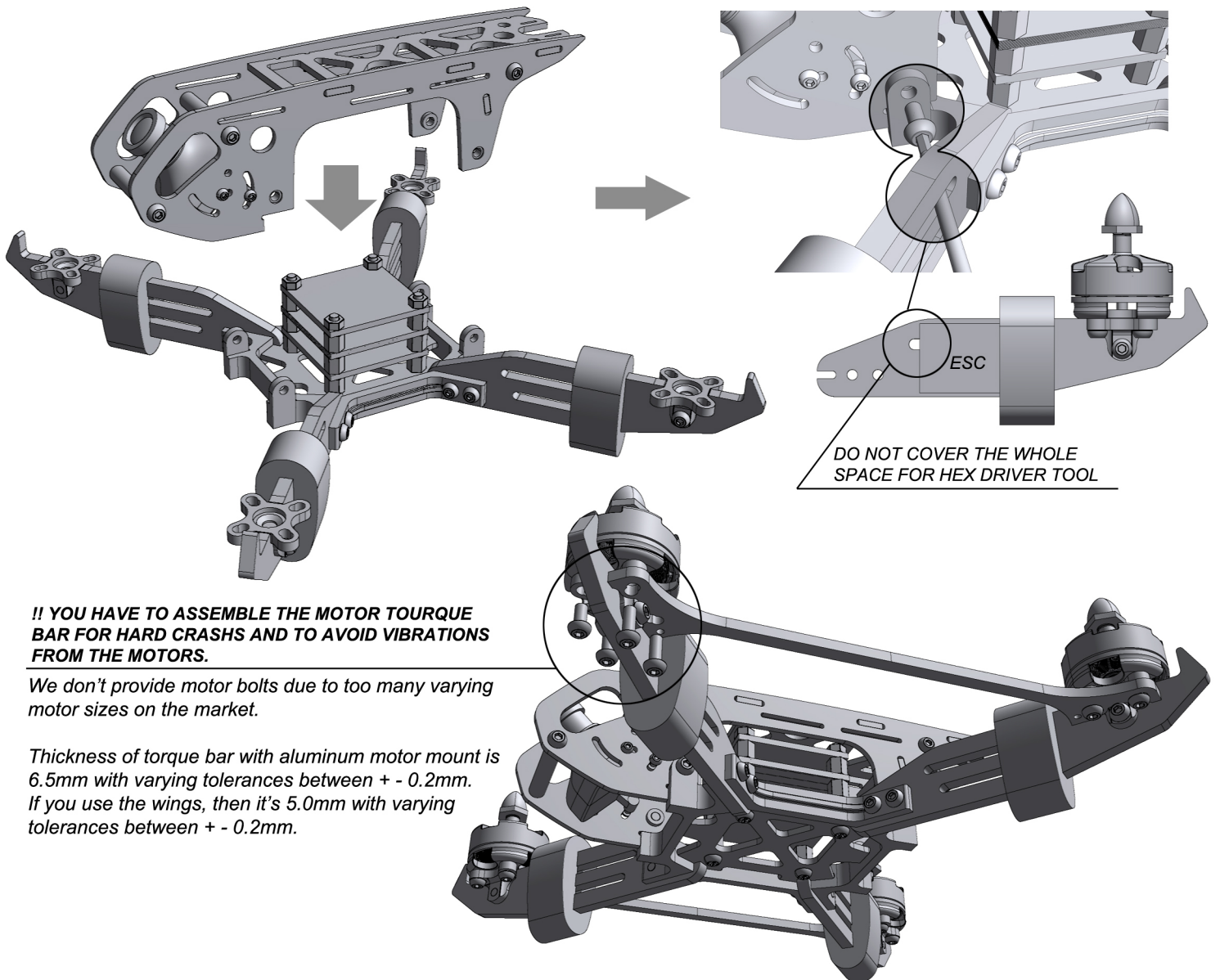


## 4 MAIN PLATE AND ALUMINIUM FRAMES ASSEMBLY.

**!! TIP: IF YOU REALLY WANT TO MAKE MINIMUM VIBRATION EFFECT TO YOUR FC BOARD, THEN USE ELECTRICAL TAPE (OR ANY THIN TAPE) TO MAIN PLATE. AS THE PICTURE BELOW.**



## 5 TOP AND BOTTOM BODY ASSEMBLY.

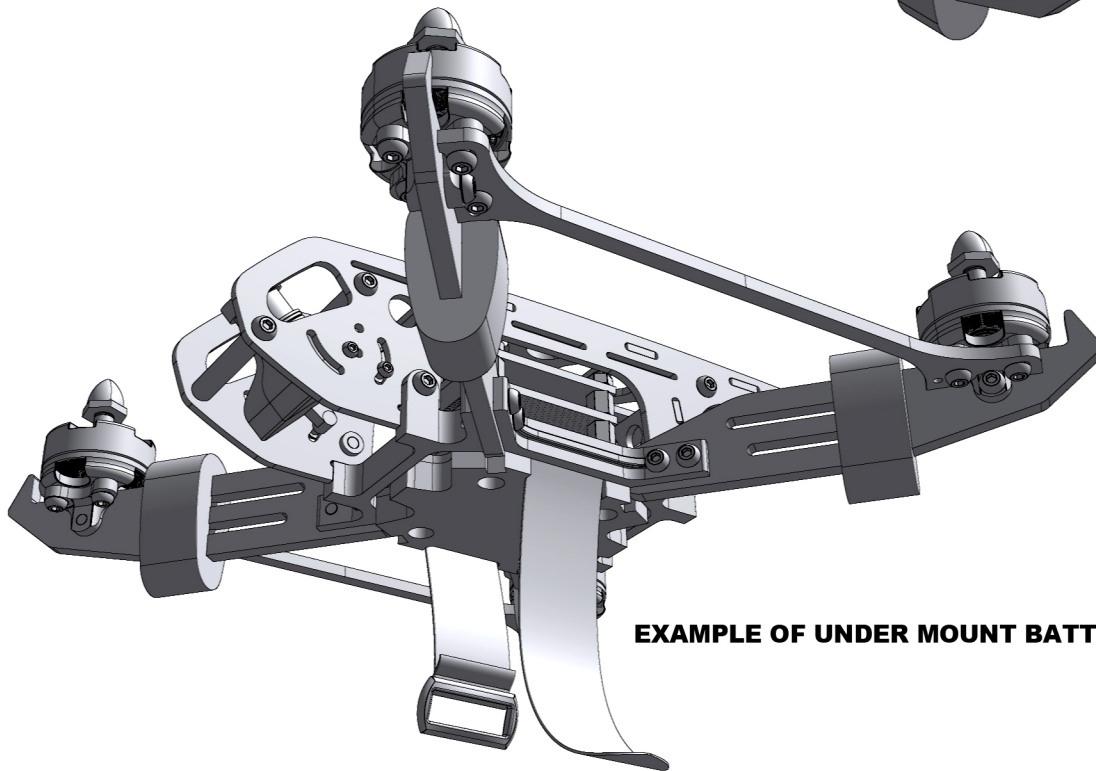
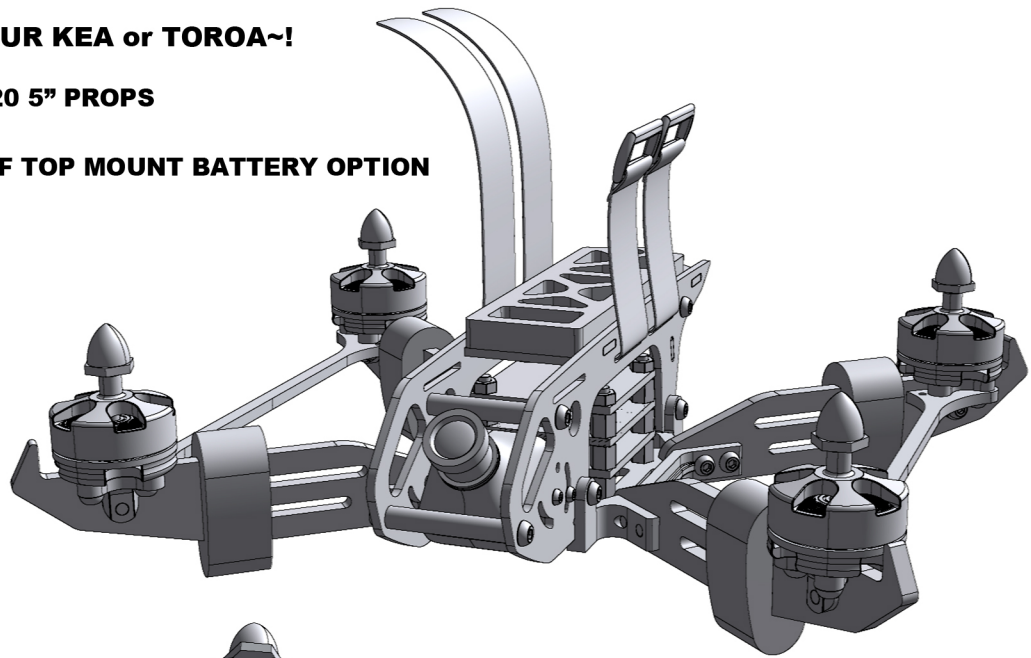




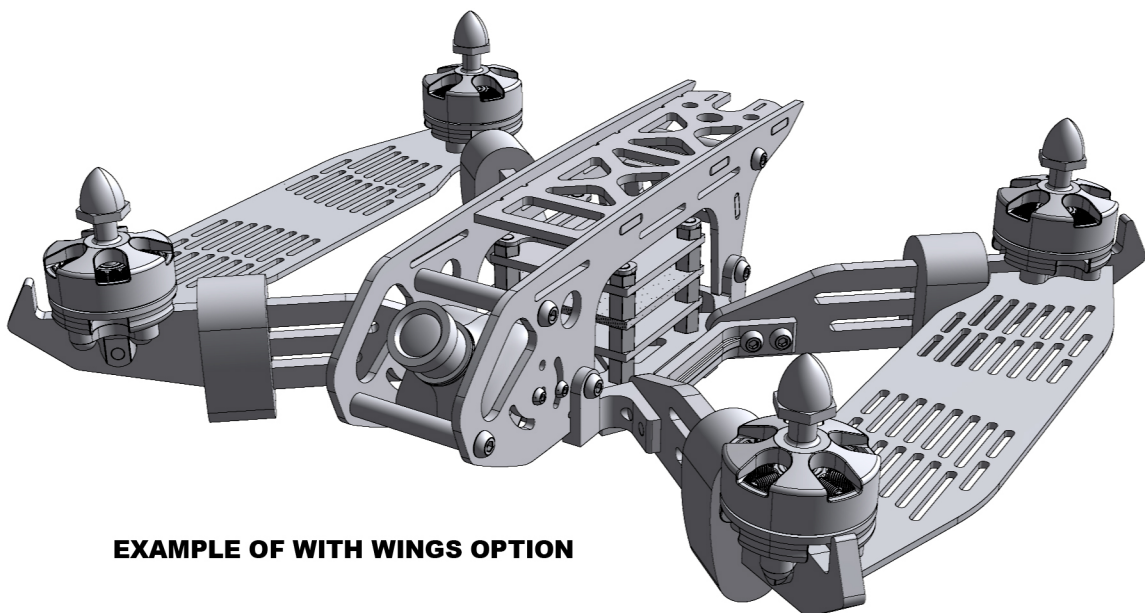
# 6 DONE, ENJOY YOUR KEA or TOROA~!

RD-035 KEA FVH 220 5" PROPS

**EXAMPLE OF TOP MOUNT BATTERY OPTION**

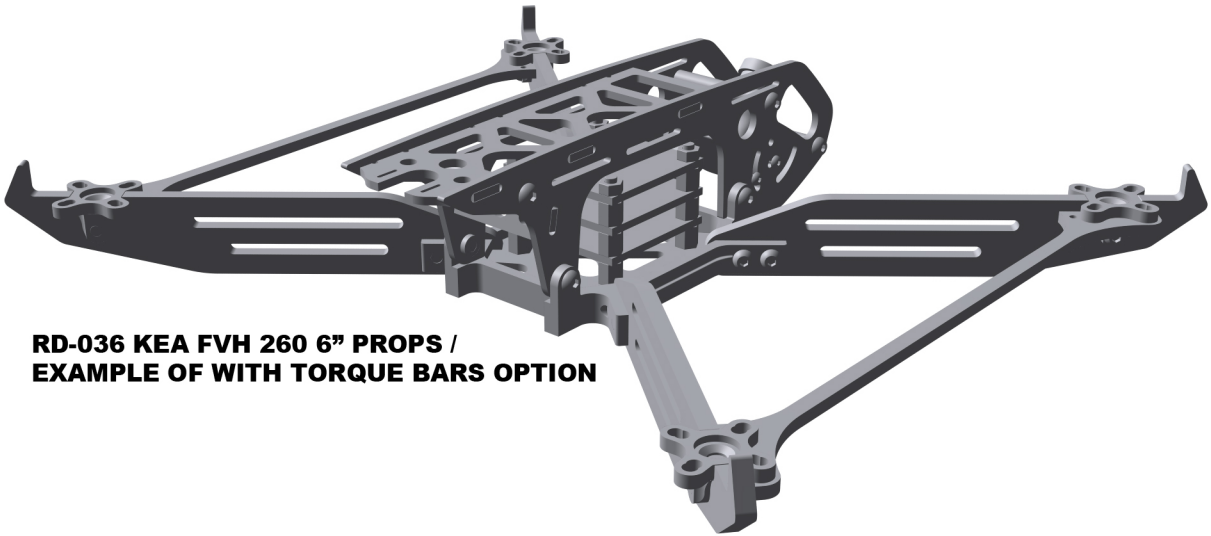


**EXAMPLE OF UNDER MOUNT BATTERY OPTION**

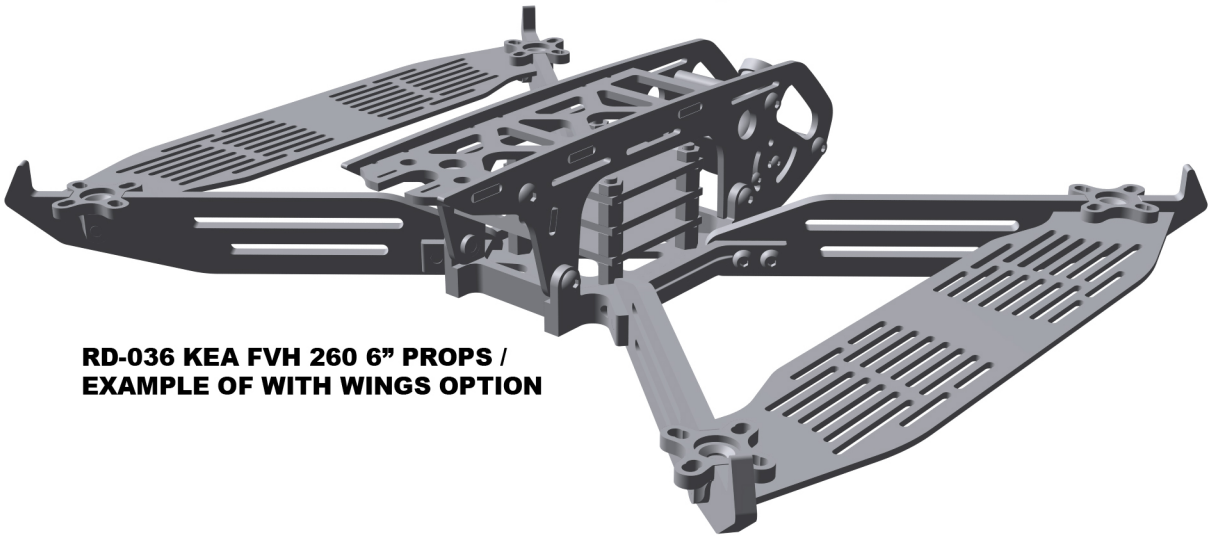


**EXAMPLE OF WITH WINGS OPTION**

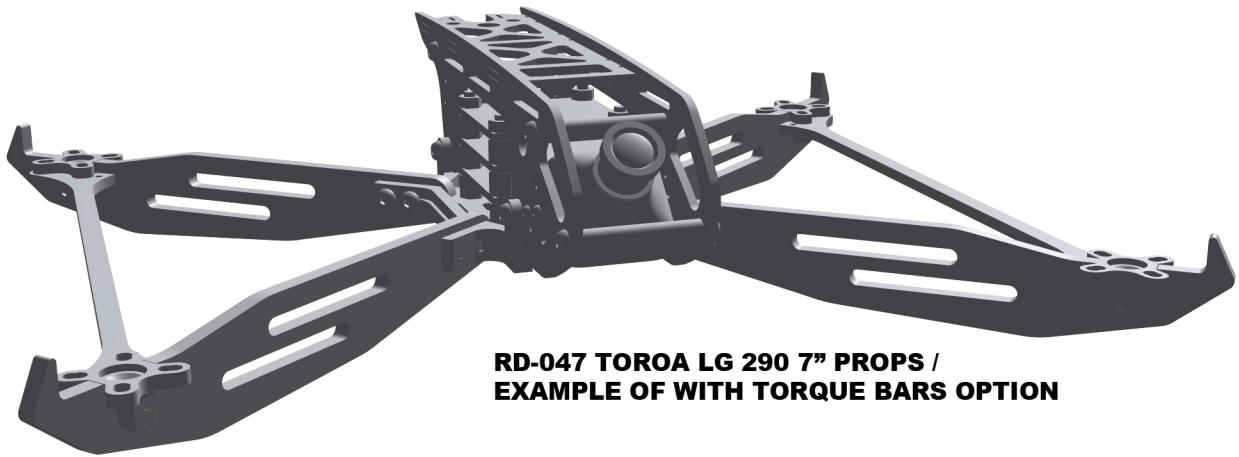




**RD-036 KEA FVH 260 6" PROPS /  
EXAMPLE OF WITH TORQUE BARS OPTION**



**RD-036 KEA FVH 260 6" PROPS /  
EXAMPLE OF WITH WINGS OPTION**



**RD-047 TOROA LG 290 7" PROPS /  
EXAMPLE OF WITH TORQUE BARS OPTION**



**RD-047 TOROA LG 290 7" PROPS /  
EXAMPLE OF WITH WINGS OPTION**